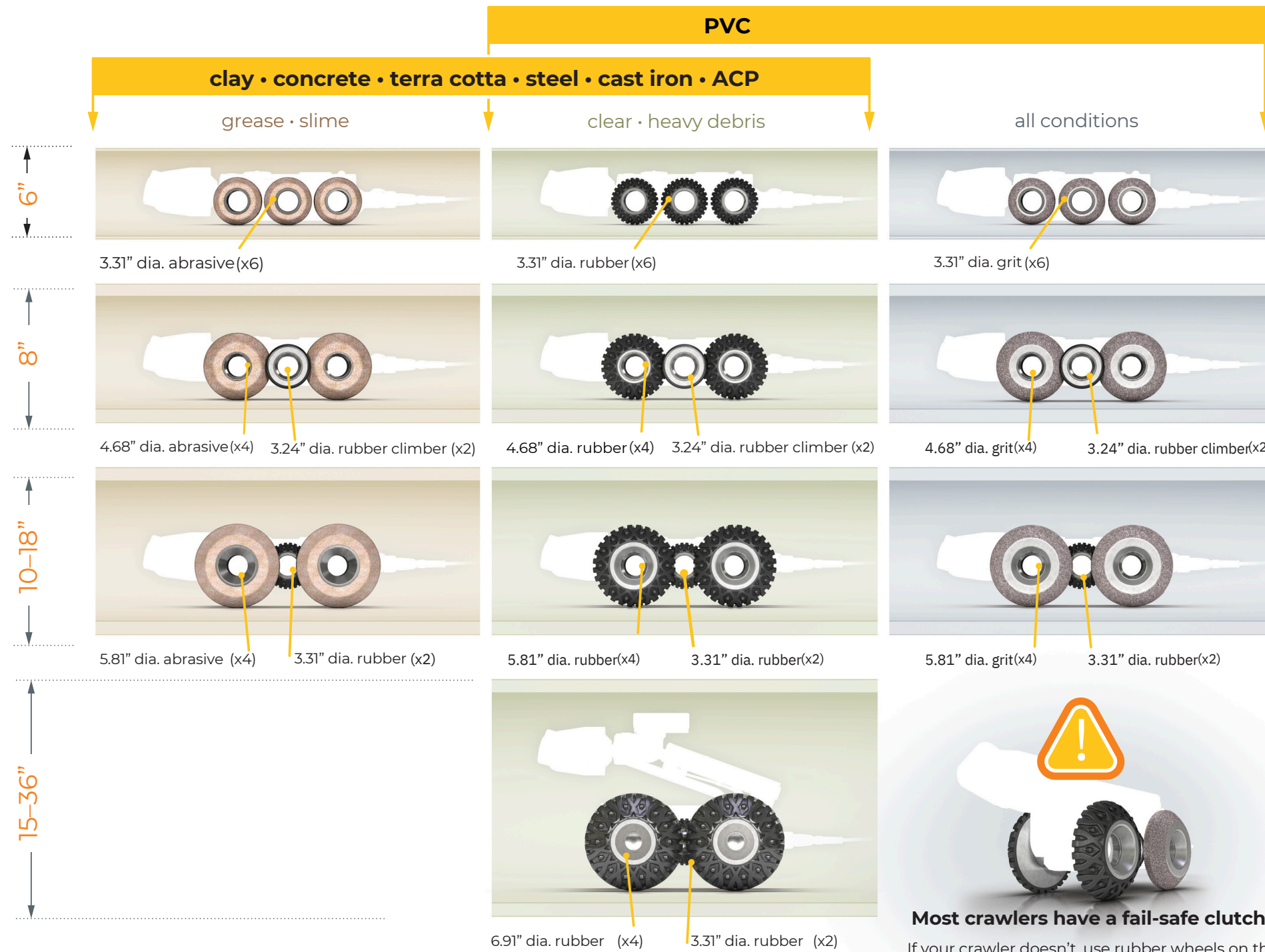
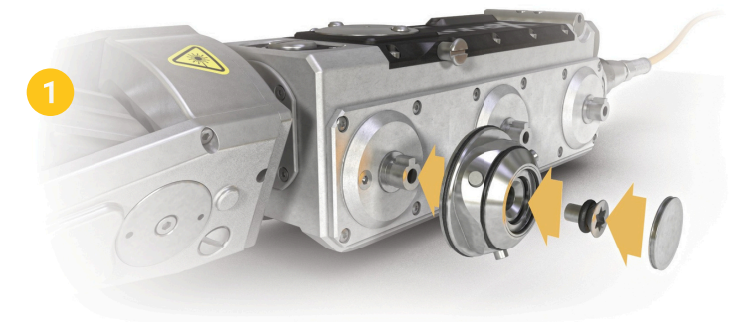


# inspection crawler wheel set-ups



**!**

**Most crawlers have a fail-safe clutch.**  
If your crawler doesn't, use rubber wheels on the front axle and grit on the rear for PVC inspection. (Failure to do so may prevent manual extraction in the event of crawler failure.)



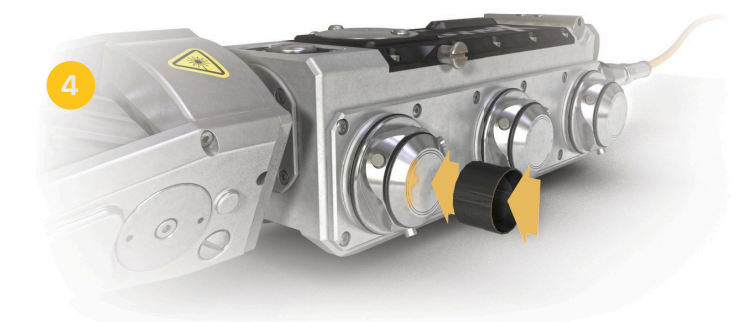
**1**  
**hub attachment:** align key-ways and slide hub onto axle • slide o-ring onto screw • apply a drop of Loc-tite to screw threads • thread screw through hub into axle • push hub cover snugly into place



**2**  
**wheel attachment:** align triangular lobes of hub with corresponding recesses on back side of wheel • push wheel firmly into place



**3**  
**wheel detachment:** push hub of wheel with thumbs while pulling with fingers from back side of wheel



**4**  
**hub detachment:** press removal tool into hub's o-ring groove • unthread fastener • pull hub from axle

