

RAPID, COMPLETE
SEWER ASSESSMENT



QUICKVIEW

AIR HD

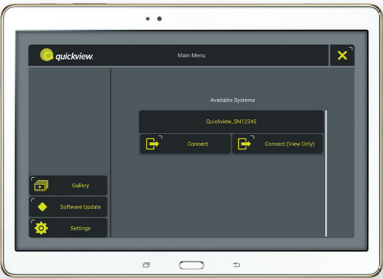
INSTANT INSIGHT ABOUT SEWERS

Quickview airHD's high-power zoom optics and focused illumination look deep into sewer lines from a manhole to see if they need repair, cleaning or further inspection.

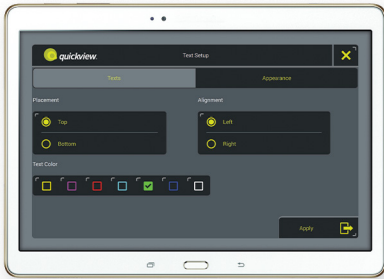
With the insight Quickview delivers, you'll make better maintenance decisions and use resources more effectively.



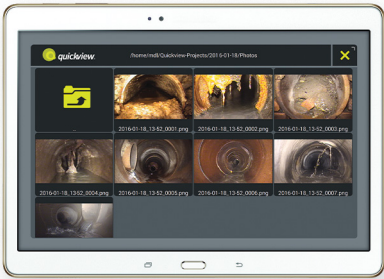
Operate with real-time video and touchscreen controls.



Connect via Wi-Fi.



Annotate your footage.



Review saved assessments.



CITY

- Identify and prioritize maintenance issues.
- Avoid confined space entry.
- Inspect hard-to-reach areas.
- Respond to emergency callouts.
- Improve sewer cleaning efficiency.

CONTRACTOR

- Survey pipe condition before bidding services.
- Document successful completion of work.

D.O.T.

- Assess storm drain and culvert condition.



CENTER

To adjust camera height in-manhole, push against the standoff's spring; a ratchet will hold your position.



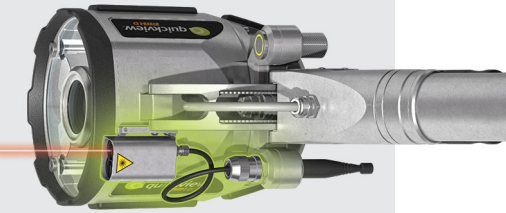
ILLUMINATE

With the camera encircled by focused light, you can see hundreds of feet into pipes.



TILT

Using touchscreen controls, remotely adjust camera tilt to achieve optimal alignment.



MEASURE

An optional rangefinder accessory measures distance-to-target with the push of a button.

6-48" pipe dia.

max. 400' view range



SYSTEM COMPONENTS

- camera head
- app (tablet not included)
- pole with standoff
- bipod
- battery (2)
- charger
- case

SPECIFICATIONS

video system

imager 1/2.8-type CMOS
 zoom . . . 360× (30× optical, 12× digital)
 resolution . 1280×720 pixel (2.38 MP)
 functions zoom
 focus (auto/manual)
 shutter (auto/manual)
 FOV (hor.) . 63.7 (wide) - 2.3 (tele) deg
 sensitivity 1.4 lux

illumination

system . . . four LED/reflector pairs
 type coaxial, collimated
 reflector type proprietary

camera head

connections 4-pin aux port
 depth rating 10' (3m)
 construction aluminum
 sensors . . . temp, pressure, incline

wireless system

Wi-Fi standard . . . IEEE 802.11b/g/n
 frequency range . 2.400–2.483 GHz
 operating channels 1–11

centering support

height adjustment . . 18.9" (480mm)
 pipe dia. 6–48" (DIN 150–1200)
 mechanism . . ratcheted gas spring

battery/charger

battery capacity 3.4 A-hr.
 battery charger mains power

pole/bipod

length (collapsed/extended) . . 4'/16'
 stabilization hands-free bipod

app

OS Android, iOS, Windows



VISIT US ONLINE seca.com.au