

WinCan Map

The geographic information system for sewer networks



Navigate and analyse your inspection data using familiar GIS views and tools. WinCan Map VX accepts all major GIS data formats (ESRI, AutoCAD, DXF/DWG, MapInfo, OpenStreetMap, etc.).

ADVANTAGES AND FEATURES

— Flexible Interface

For easier interaction, you can group interface elements according to function, resize them, and turn them on or off. Interface customizations can be saved for easy recall and sharing.

— Lateral Inferencing

During a mainline inspection, important information is gathered about lateral connections: location, angle and clock position. WinCan Map VX uses this data to display laterals on GIS maps, and to export them to DXF and Shape files.

— Asset Geolocation

When an asset position is unknown, WinCan Map VX can accept coordinates directly from a GPS unit and map it.

— Data Visualisation

Color-code map elements according to asset attributes (material, age, profile, damage classification, etc.), and then save those preferences as a template. Several standard templates also come with WinCan VX.

— Direct Integration

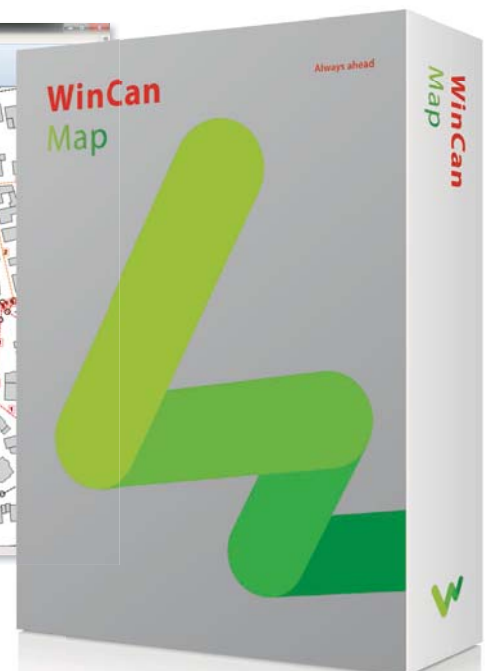
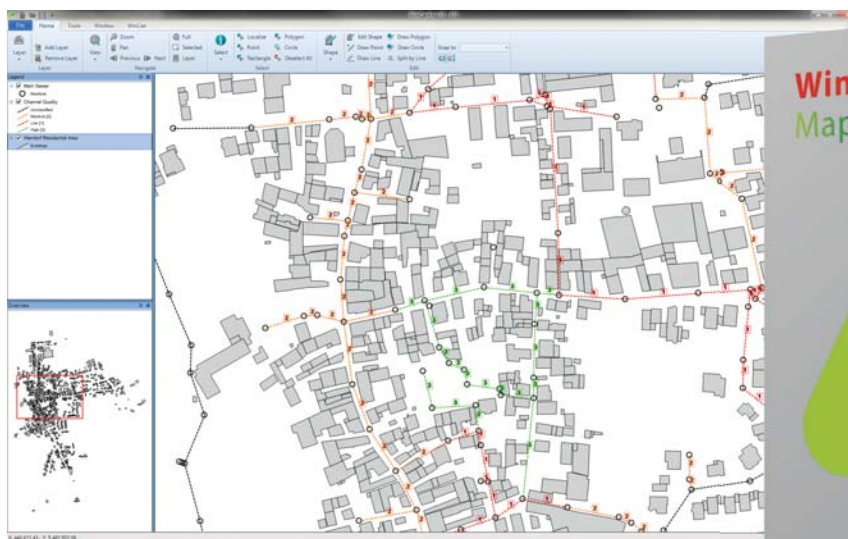
WinCan Map VX integrates seamlessly with the WinCan platform; selecting a map element highlights the corresponding asset or observation in WinCan VX, and vice versa.

— Data Transfer

To send a collection of sections to WinCan VX, simply drag to select all the corresponding elements on a map. No more time-consuming, error-prone re-entry of section or manhole data.

— Scalability

Navigate large projects with thousands of objects without any delay, thanks to WinCan Map VX's high-performance GIS engine.



WinCan Analyst

Allowing municipalities and engineers to analyze and manage collection systems

WinCan Analyst is a software to value, manage and analyse Sewer Networks. The software is based on the WinCan VX platform, which secures a direct integration of the inspection data to the analyse of this data, without a need to interchange the data, which could reflect in loss of specific data (like inclination measurement). One of the main values of WinCan Analyst is the seamless integration into different GIS Systems and the optimisation for high performance, also with high data volume. WinCan Analyst contains different functional areas: Management of status data of the sewer systems including their automatised classification, analysis of the characteristics of the sewer systems in GIS systems, issue of statistics and reports – as well as maintenance planning's for pipes and manhole systems.

ADVANTAGES AND FEATURES

— One Unified Solution

WinCan Analyst includes the full set of functionality engineers and municipal managers need to manage collection systems of any size, saving the time and expense of patching together several less capable applications.

— Data Management

Perform standards-compliant data collection, comprehensive reporting, and all the other basic functions for managing sewer data.

