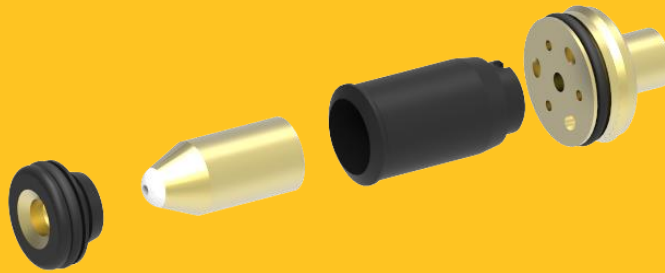


## Maintenance/Repair of enz Bent RotoDrill & RotoDrill

If you use a RotoDrill nozzle and it suddenly stops turning, it could be time to replace the internal mechanisms. That's very easy to do. The repair sets (pictured) are delivered complete and can be installed using a threaded rod.



At the following link you'll see a guide to how the RotoDrill can correctly be taken apart and cleaned.

<https://www.youtube.com/watch?v=vBJvzErzwOM&feature=youtu.be>



[Rotodrill repair -  
YouTube+](https://www.youtube.com/watch?v=vBJvzErzwOM&feature=youtu.be)