

SETTING THE STANDARD FOR AFFORDABLE QUALITY EXCELLENCE

Hathorn H12+ Control Module (for standard reels)

Featuring a cutting-edge, impact-resistant 12" LCD screen that outshines the competition with nearly three times the brightness of conventional camera systems. Elevate your professional experience with the H12+, the preferred option for experts in all lighting scenarios, even under the most challenging conditions such as direct sunlight.

FEATURES INCLUDE:

- ✔ Light weight - only 4.5kgs
- ✔ Mains power adaptor supplied
- ✔ Standard reels come in 60m & 120m lengths
- ✔ Internal hard drive of 128GB
- ✔ Full size keyboard daylight readable display
- ✔ Screenshot function



*Uses a 18V Milwaukee battery (not included)

Hathorn Standard Reels

Tackle any job with extended reach and precision
Available in 2 sizes:

MEDIUM:

- ✔ 60m push rod
- ✔ 6" wheels for easy transport
- ✔ 1.23 self-leveling camera
- ✔ Includes 512Hz sonde
- ✔ Weighs only 20kgs
- ✔ Corrosion and chemical resistant premium HDPE Cables

LARGE:

- ✔ 120m push rod
- ✔ 8" wheels for easy transport
- ✔ 1.43 self-leveling camera
- ✔ Includes 512Hz sonde
- ✔ Weighs only 30kgs
- ✔ Corrosion and chemical resistant premium HDPE Cables



HATHORN[®] H12⁺

CONTROL MODULE

Specifications

Display

Size & Type	12" impact resistant LCD
Resolution & Brightness	XGA 1024 x 768 pixels with 1,300 cd/m2
Zoom	1X, 2X, 4X, BX with digital pan feature

Recording, Storage & Features

Recording Options	MPEG4 video (H.264 at 3 fps) & JPEG screenshot
Storage Options	USB, HDD, or USB & HDD
USB Capacity	USB 2.0 to 32Gb
Hard Drive Capacity	128Gb SSD
Keyboard	Full sized QWERTY with silicone cover
Camera Head LED	Dimming control 5% increments
Hathorn Info Bar	74 characters over two lines with time/date
Text Overlay	8 pages- save, recall, hide, delete
Audio	Integrated microphone and speaker
Footage Counter	Feet or meters with reset function
Sonde Frequency	High power 512Hz
Reel Compatibility	Hathorn Standard Reels (except Wi-Fi)

Power

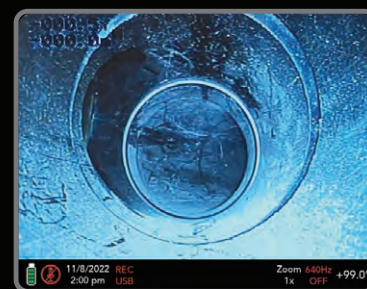
Battery (not included)	Only Milwaukee® M18 18V battery
Battery Life	~4hrs. using 3.0Ah
Battery Power Save Mode	Auto dimming & auto save
AC/DC Adapter	12V - 4.1A (included)

Weight & Dimensions

Weight Without Battery	4.3kgs
Dimensions (L x W x H)	38cm x 30cm x 14cm

Environmental

Water Resistance	IP65 when lid closed L IP64 when lid open
Operating Temperature	-10°C to 50°C
Storage Temperature	-20°C to 60°C



The Hathorn Info Bar at the bottom of the screen allows you to see battery life, speaker function, time and date, recording file location, zoom, sonde frequency/function and footage. The info bar is customizable allowing you to put your company or client info at the bottom of the screen, recorded throughout the video. The newly designed, intuitive menus allow for a minimal learning curve. You are up and running in minutes.

