

WHAT IS RootX?

RootX? IS THE ROOT INTRUSION SOLUTION.



RootX is the original, non-metam sodium foaming root control in an easy-to-apply powdered formulation. It foams on contact with water to kill roots, inhibit regrowth, and restore pipe flow capacity.

IT'S SIMPLE AND FAST.

The patented RootX formulation foams on contact with water. The foam can fill the entire pipe or be sprayed on in a foam coating. Either way, RootX reaches the top of the pipe where 90% of the root intrusion occurs. From start to finish, a RootX application takes less than 30 minutes using standard sewer maintenance equipment.

IT'S EFFECTIVE.

The active ingredient in RootX is the aquatic herbicide Dichlobenil. It has been used for years to control aquatic weeds with minimal environmental impact.

RootX contains surfactants, degreasing agents that strip away the grime on roots, allowing Dichlobenil to penetrate the root ends.

RootX can be used in both sanitary and storm lines without adversely affecting the environment or the people who apply it. It is also effective in septic tanks.

IT'S A PROVEN SOLUTION.

Tests have shown that Dichlobenil will kill roots at concentrations of 100 ppm (parts per million). The concentration of Dichlobenil applied to roots during a RootX application is approximately 500 ppm.

For over a decade thousands of municipalities and professional drain cleaners have depended on RootX for their pipeline maintenance solution.

TODAY...



Step 1 - Mechanical cutting of roots clears roots from pipe, leaving some behind.



Step 2 - Add RootX. Foam kills remaining roots and inhibits future regrowth.

TWELVE WEEKS LATER...



With RootX, debris is decaying and roots are stunted.



Without RootX, roots begin vigorous regrowth into the newly cleared space.

NINE MONTHS LATER...



With RootX



Without RootX

ROOT X RESTORES PIPE FLOW CAPACITY!

THE RootX ADVANTAGE. THE SIMPLE, EFFECTIVE AND PROVEN SOLUTION.

SIMPLE

	RootX	Root-Cutting Only	Other Foaming Products	Copper Sulfate
Safe to handle	✓			
Prepackaged for easy application	✓			✓
Ready to use - just add water	✓	✓		✓
Treats intrusion in 30 minutes or less	✓			✓
Uses existing equipment	✓	✓		
Saves labour costs	✓			
Easily added to pipe maintenance programs	✓			
Provides quick and easy root control	✓			
Sold online to licenced plumbers only	✓			

EFFECTIVE

Kills roots on contact	✓		✓	✓
Foaming action coats pipe walls	✓		✓	
Prevents regrowth	✓			
Strips away grime to penetrate roots	✓		✓	
Reaches top of pipe-and roots	✓		✓	
Uses aquatic herbicide	✓			
Speeds decay of root debris	✓			

PROVEN

Safeguards sewers and waste treatment plants	✓	✓		
Safe for septic systems	✓	✓		
Protects plants and trees	✓	✓		
Enhances bacterial growth	✓			
Doesn't contain copper sulfate or metam sodium	✓	✓		
Prevents pipe damage from cutting	✓			
Non-caustic	✓			

RootX is conveniently prepackaged in 908g and 1.8kg jars for residential service laterals, and 9.1kg bags for municipal pipelines.



APPLICATION CHART

Apply directly from the package.
(Jars or Bag)

908g	15m	100mm pipe
1.8kg	30m	100mm pipe
1.8kg	23m	150mm pipe
18kg	45m - 91m	200mm pipe

IDEAL FOR PROFESSIONALS

RootX is available in 908g and 1.8kg jars for smaller diameter pipes and for easy application through a toilet or into a septic tank.



HOW ROOT X CAN HELP YOU:

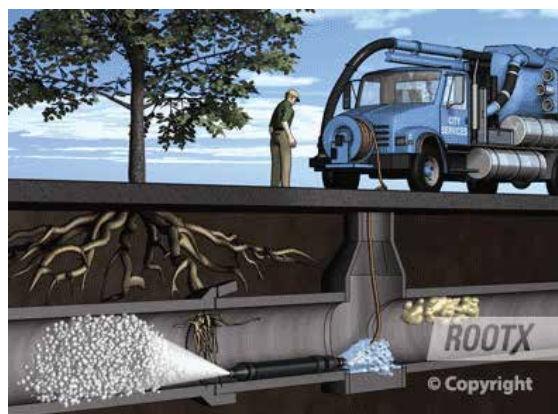
1. Apply RootX through the sewer clean-out whenever possible.
2. Apply RootX in only one location per treatment.
3. Apply RootX from early spring to late autumn. Dormant roots don't absorb chemicals as effectively.
4. If roots block 50% or more of the pipe, treat mechanically before using RootX.
5. Apply RootX within one hour of mechanical root removal - or wait 6 to 8 weeks. Damaged roots quickly release sap that blocks the absorption of RootX. Waiting 6 to 8 weeks allows enough regrowth for RootX to be reabsorbed.
6. Never apply more than 908g of RootX through a toilet.
7. RootX is an effective solution for septic tank root problems. Apply 3.6kg per 3785ltr tank through the cleanouts to leach lines or the distribution box.



BEFORE



AFTER



RootX saves time and money for municipal maintenance departments when it's used to treat root intrusion in sewer and storm lines.

RootX is a profitable root control solution for professional plumbers and drain cleaners.

VISIT US ONLINE **seca.com.au**

or email **sales@seca.com.au**